



10th annual comparative analysis of the Racine Unified School District

*Demographics, attendance, finances,
student engagement, and achievement*

November 2007

Submitted by:

Jeffrey C. Browne, President
Anneliese Dickman, Research Director
Jeffrey K. Schmidt, Researcher

Commissioned by:

Education Racine, Inc.

TABLE OF CONTENTS

Narrative

Summary	3	Student achievement	14
Enrollment	4	Appendix A - Definition of terms	A1
Community demographics	7	Appendix B - Peer district rankings tables	B1
Operational efficiency	8	Appendix C - Individual schools	C1
Student engagement	12		

Charts

1. Public school enrollment trend	4	13. Trends in attendance rates	12
2. Minority enrollment trend	4	14. Trends in dropout rates	12
3. RUSD class of 2002-03 cohort analysis	5	15. Trends in habitual truancy	13
4. RUSD class of 2006-07 cohort analysis	5	16. Trends in suspensions and expulsions	13
5. Private school enrollment trend	6	17. 3rd grade reading scores	14
6. Charter school enrollment trend	6	18. 4th grade reading scores	14
7. Trends in RUSD free or reduced-price lunch eligibility	7	19. 4th grade math scores	15
8. Trends in per-pupil operations revenue	8	20. 8th grade reading scores	15
9. Trends in per-pupil operations spending	9	21. 8th grade math scores	15
10. Trends in teacher salaries	10	22. 10th grade reading scores	16
11. Trends in teacher fringe benefits	10	23. 10th grade math scores	16
12. Trends in teacher experience	11	24. Trend in ACT composite scores	17

Tables

1. Community demographics	7	12. Attendance, truancy, and dropout rates	B4
2. Change in aggregate revenue	8	13. Suspensions and expulsions	B4
3. Change in spending	9	14. 3rd grade WKCE reading and math scores	B5
4. 4th-6th grade cohort reading analysis	16	15. 4th grade WKCE reading and math scores	B5
5. Enrollment by race/ethnicity	B1	16. 5th grade WKCE reading and math scores	B5
6. Enrollment by race/ethnicity and grade	B1	17. 6th grade WKCE reading and math scores	B6
7. Educational options	B2	18. 7th grade WKCE reading and math scores	B6
8. Revenue per pupil	B2	19. 8th grade WKCE reading and math scores	B6
9. Expenditures per pupil	B3	20. 10th grade WKCE reading and math scores	B7
10. Average teacher compensation	B3	21. High school completion	B7
11. Average teacher experience	B4	22. Advanced placement (AP) exams	B7

10th annual comparative analysis of the Racine Unified School District

Summary

Over the past decade, conditions affecting the Racine Unified School District (RUSD), as well as school outcomes, have changed in some ways – and remained remarkably stable in others. Therefore, more than in previous report, this analysis of RUSD takes a longer-term view. Even so, this study follows a format similar to that of the first report commissioned in 1998. The analysis compares RUSD to nine peer school districts and the state of Wisconsin. RUSD peer districts, for the most part, are Wisconsin's largest (Milwaukee Public Schools is not included) and their enrollments are similar to the enrollment in Racine. Each district is examined based on enrollment, finances, staffing, student engagement, and student performance. Data collected for the analyses over the past 10 years makes it possible to provide a snapshot of how RUSD is faring and puts the latest information in a historical context.

We have grouped the findings in the report based on RUSD quality objective measures: student achievement, student engagement, customer satisfaction, and operational effectiveness and efficiency. Student achievement includes test scores and graduation rates; student engagement includes attendance and behavior; and operational efficiency includes finances and staffing data. Our data do not fit with the customer satisfaction objective.

Major Findings

Enrollment: RUSD enrollment for 2006-07 increased 2.5% to 21,696. RUSD is the fourth largest district in the state - behind districts serving Milwaukee, Madison, and Kenosha. Not only did total enrollment in the district increase, but enrollment of minority students continued to increase also.

Student diversity: RUSD is moving toward a majority/minority enrollment primarily because of the rapid growth of Asian and Hispanic students. African American enrollment has increased modestly in recent years, and white enrollment has declined somewhat. Overall, 48.1% of students who attended RUSD were minority in 2006-07, up from 36.9% in 1997-98 and 46.5% in 2005-06.

Operational efficiency: State aid to RUSD is up 40.2% since the first report, while property tax revenue is up 21.4%. The district ranked fourth in state aid and eighth out of 10 districts in property taxes collected per pupil. The tax rate for 2007 was \$6.83 per \$1,000 of property value. Racine was third in instruction spending per pupil and in sixth operations spending. RUSD spent \$10,169 per pupil.

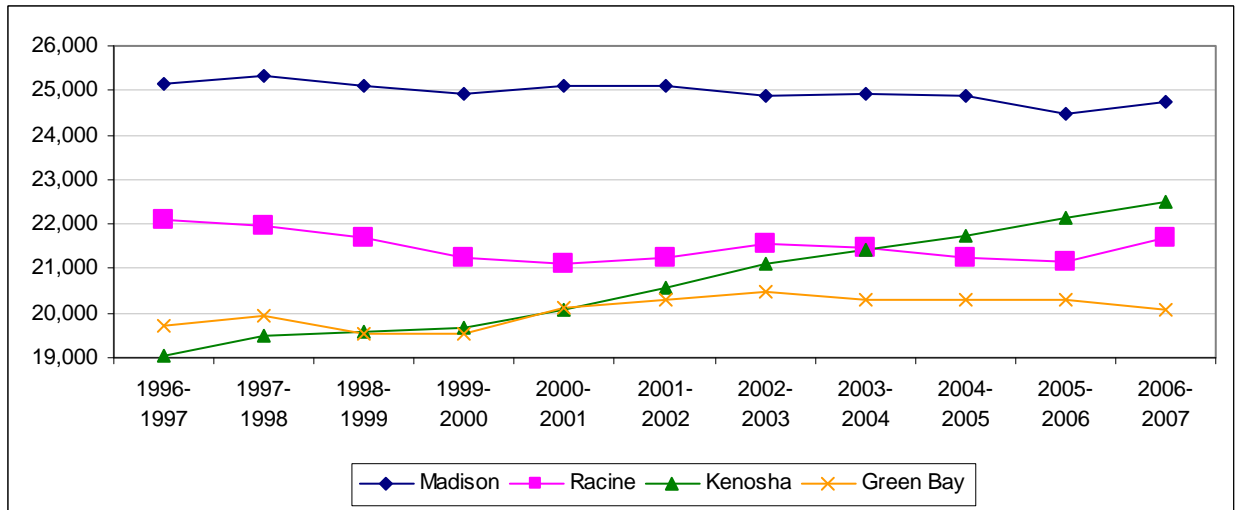
Student engagement: For the fifth consecutive year, RUSD improved its truancy rate. The 2005-06 rate was 8.7%, the lowest since 1996-97 and below the statewide rate of 9.7%. The attendance rate declined from 2004-05 to 2005-06 and the dropout rate grew at RUSD. The suspension rate increased in 2005-06, while the expulsion rate decreased from 2004-05 to 2005-06. Compared to peer districts, RUSD had the highest rates for both suspensions and expulsions. In 2005-06, 120 students were expelled, about 60% of the number expelled the prior year.

Student achievement: Student performance measurements at RUSD yielded mixed findings. Students in the 10th grade scored lower in both reading and math than in the previous year. Reading scores in the 4th grade and math scores in 8th grade also declined. Third grade reading and 4th grade math scores increased from last year. Eighth grade reading scores did not change.

Enrollment Characteristics

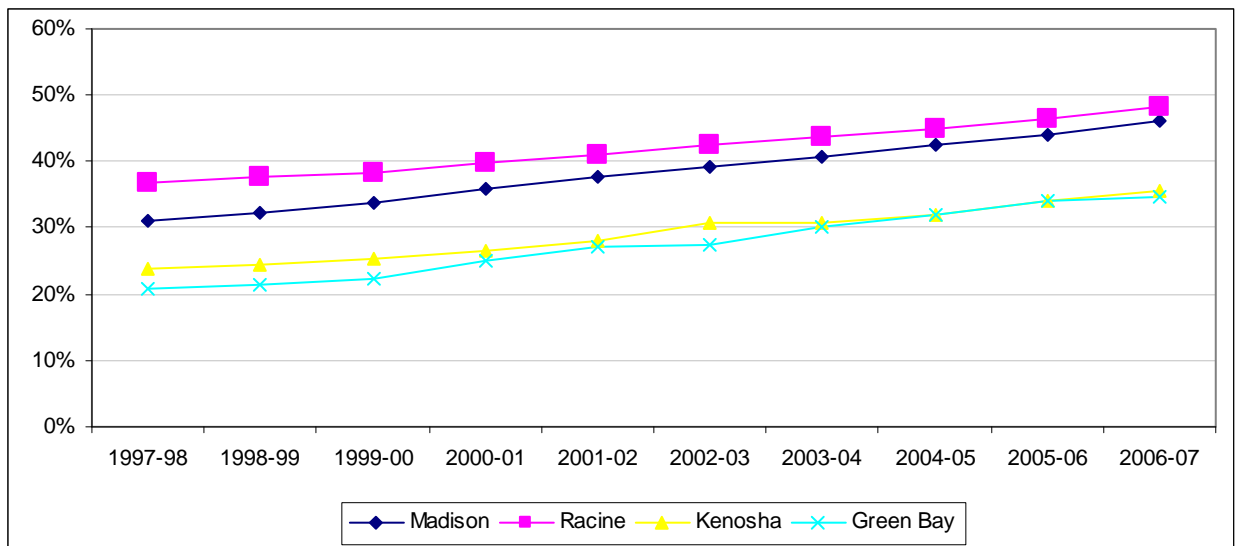
After three years of decline, RUSD total enrollment increased 2.5% in 2006-07, the largest increase among peer districts and the highest it has been since the 1998-99 school year. RUSD is the fourth largest district in the state behind Milwaukee, Madison, and Kenosha. Four of the 10 peer districts had a decrease in total enrollment from 2005-06 and 2006-07, while the state had an increase of 0.2%.

Figure 1: Public school enrollment trend, 1996 to 2007



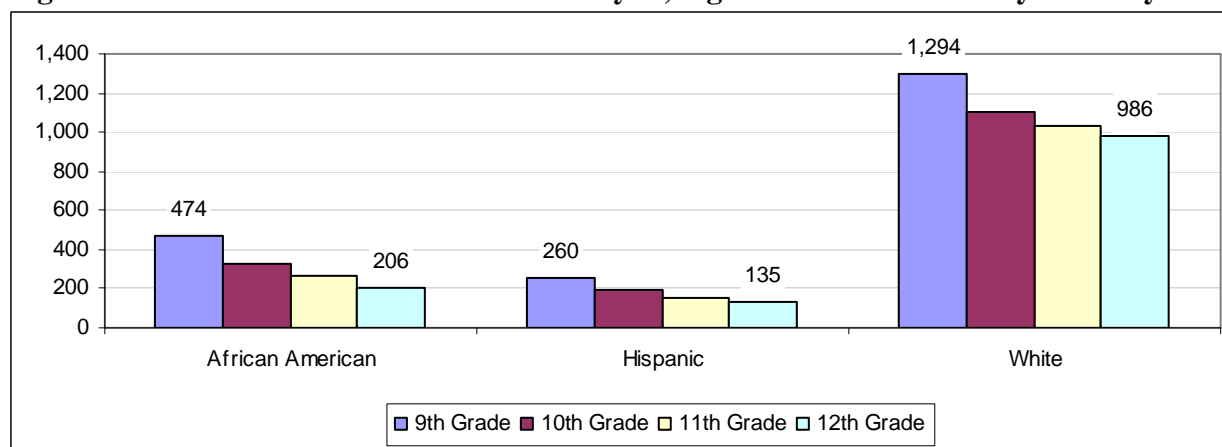
As **Figure 2** shows, RUSD has enrolled the highest percentage of minority students among peer districts for 10 straight years. In 2006-07, 48.1% of the enrollment at RUSD was minority - slightly higher than Madison's percentage of 46.1% - making it one of the most diverse districts in the state. In 2006-07, 51.9% of the students were white, 26.7% were African American, and 19.6% were Hispanic. Statewide, 22.1% of the students were minority in 2006-07.

Figure 2: Minority enrollment trend, 1996 to 2007



Historically in RUSD there has always been a decrease in enrollment in a cohort group of students as they move through the high school grades. The decrease in African-American and Hispanic students has also always been larger than with white students. For the 2002-03 RUSD class, there 34% fewer seniors than there were freshman four years ago. Of whites, 76% of the freshman were seniors four years later. Of Hispanics, 52% of the class of 2002-03 stayed in school four years. And among African Americans, 43% of the freshmen were seniors after four years.

Figure 3: RUSD class of 2002-03 cohort analysis, high school enrollment by ethnicity



There was a much different picture for the 2006-07 RUSD class. There were more 12th graders enrolled than 9th graders in 2003-04. This was mostly reflected in an increase of 206 students between the 11th graders in 2005-06 and the 12th graders in 2006-07. Part of this increase is due to special education students over 18 years old being counted as “5th year seniors” and added into the 12th grade enrollment. Another possibility is that 12th graders that were retained in 2005-06 were counted as 12th graders again in 2006-07. However, the main cause of this increase is not clear. This was the first year we have seen a dramatic increase from 11th to 12th grade cohorts, and the first time there were more 12th graders than 9th graders.

The increase occurred across all races. There were 1,051 white 9th graders in 2003-04; in 2006-07 there were 1,089, for an increase of 4%. Among Hispanic students in 2006-07, there were 266 12th graders, an increase of 11% from the number of 9th graders in 2003-04. There were also 11% more African-American 12th graders in 2006-07 compared to 9th graders four years ago.

Figure 4: RUSD class of 2006-07 cohort analysis, high school enrollment by ethnicity

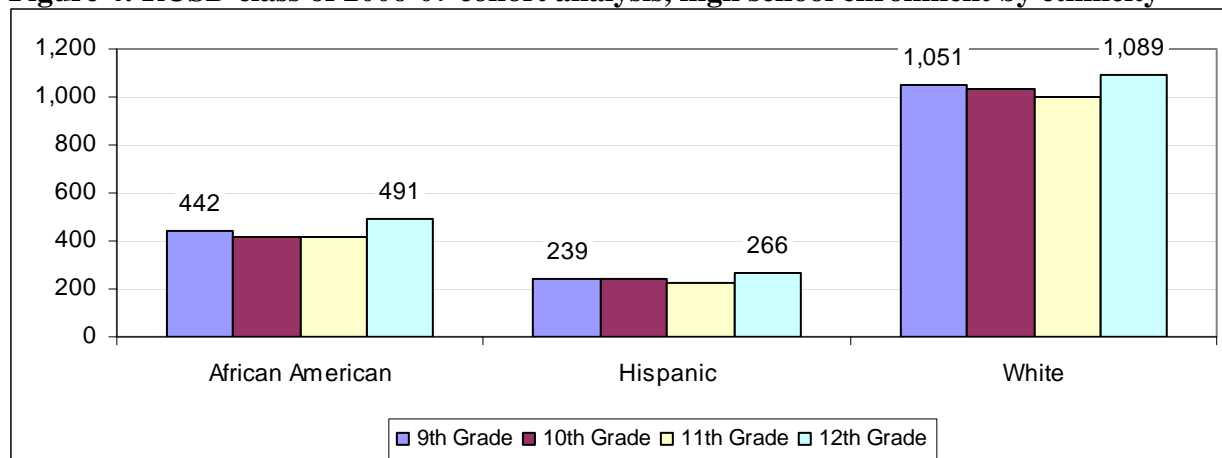


Chart 5 shows that private school enrollment has been declining for the past five years. In the city of Racine, 4,134 students attended private schools in 2006-07, or 19.1% of public school enrollment. This put RUSD third among peer districts. Appleton had the highest percentage of students attending private schools in 2006-07, 21.2%.

Not only did Appleton have the highest percentage of private-school students, but it also had the highest percentage of students attending charter schools, 10.7%. RUSD ranked third in the percent of total enrollment attending charter schools with 4.7%. Since 2002-03, RUSD charter school enrollment has decreased 32%. In 2006-07, there were 443 students (equal to 2% of RUSD enrollment) enrolled in the Racine charter school, 21st Century Preparatory School,

RUSD ranked first among peer districts in the percentage of students who are home-schooled. In 2006-07, 526 were home-schooled, or 2.4% of Racine’s total public enrollment. Statewide, just over 20,000 children were home-schooled in 2006-07, equaling 2.3% of public school enrollment.

Figure 5: Private school enrollment trend, 2002-03 to 2006-07

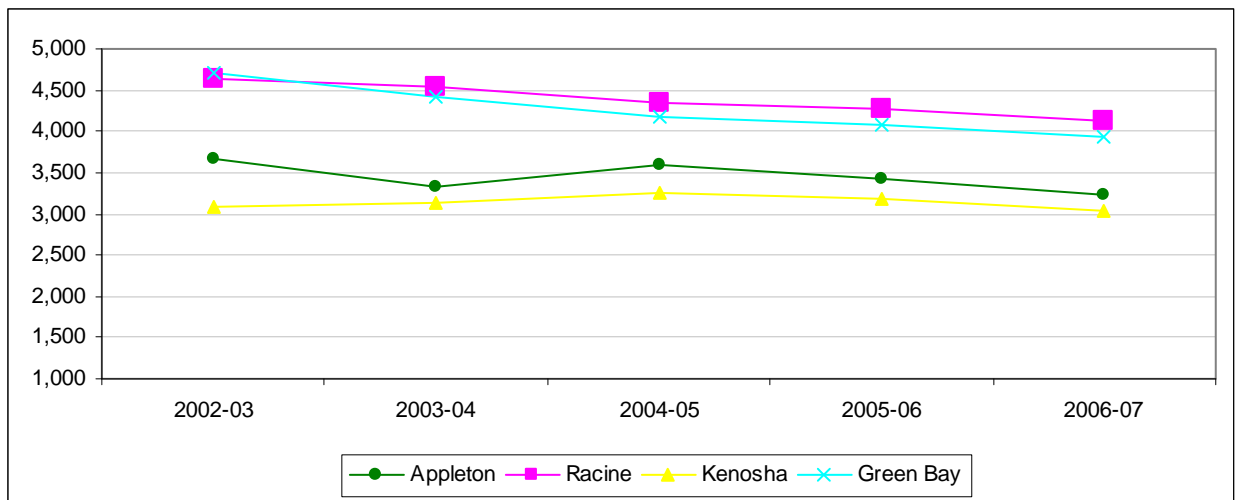
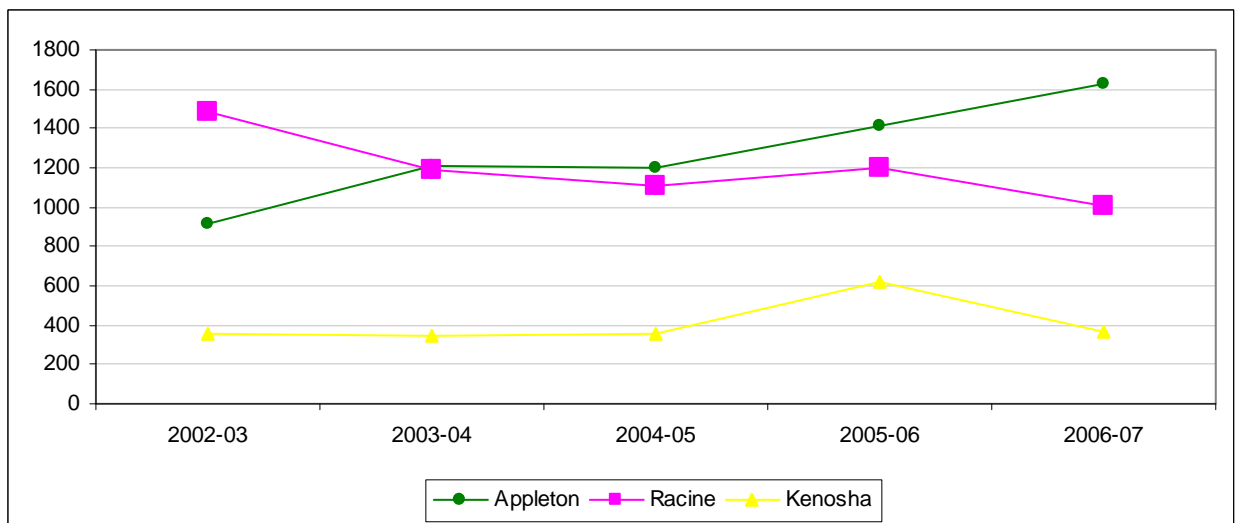


Figure 6: Charter school enrollment trend, 2002-03 to 2006-07



From 2005-06 to 2006-07, the average income per tax return and the average income per pupil in RUSD both increased. Despite district gains in affluence, the number of students eligible for free and reduced price lunches also grew. Forty-three percent of RUSD students were eligible for free or reduced lunches, up from 42% a year earlier. For the fifth straight year, this measure has increased, reaching a 10-year high. Green Bay was the only peer district to have a higher percentage of students receiving free and reduced lunch. For the entire state, 31% of students are eligible for free and reduced lunch, about two percentage points lower than in 2005-06.

Figure 7: Trends in RUSD free or reduced-price lunch eligibility, 1997-98 to 2006-07

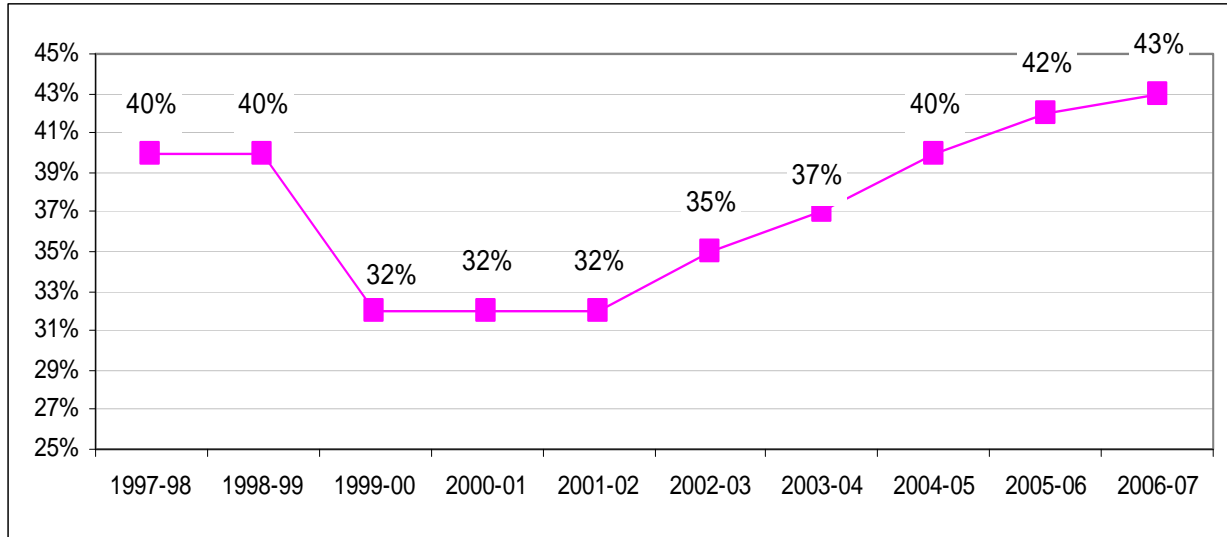


Table 1: Community demographics among peer districts

Community Demographics	Free lunch eligible	Rank	Income per return	Rank	Income per pupil	Rank	Property value per pupil	Rank
Madison	40.4%	3	\$47,955	3	\$218,816	1	\$838,374	1
Kenosha	38.9%	4	\$43,887	6	\$103,188	10	\$399,124	8
Racine	42.7%	2	\$45,695	5	\$130,156	7	\$417,105	7
Green Bay	45.3%	1	\$43,118	9	\$144,479	5	\$418,467	6
Appleton	26.9%	9	\$47,817	4	\$149,607	4	\$434,414	5
Waukesha	21.9%	10	\$55,102	2	\$199,774	3	\$708,363	2
Eau Claire	29.7%	8	\$63,872	1	\$211,065	2	\$484,174	3
Janesville	31.9%	6	\$43,344	8	\$126,240	8	\$358,519	9
Oshkosh	30.2%	7	\$43,884	7	\$142,939	6	\$440,827	4
Sheboygan	34.4%	5	\$40,738	10	\$115,346	9	\$332,605	10
Milwaukee	77.0%		\$33,387		\$88,219		\$318,005	
Wisconsin	31.1%		\$46,396		\$133,493		\$561,198	

Operational Efficiency

Finances

RUSD was sixth among peer districts in 2006-07 in total per-pupil operations revenue. Its operations revenue was on par with the state as a whole. In 2006-07, property tax revenue accounted for 25% of the total RUSD revenue. State aid made up the largest portion of RUSD revenue in 2006-07. Sixty-five percent of total revenue came from state aid, third most among peer districts.

Figure 8 shows that RUSD per-pupil operations revenue has been increasing slightly for the past five years. Since 2002-03, its per-pupil operations revenue has increased 19.4%. RUSD operations revenue is comparable to Kenosha and Green Bay, both of which are similar in size to RUSD.

Over the past 10 years, RUSD state and federal aid growth has been among the lowest among peer districts, ranking eighth and ninth respectively. Its property tax revenue has grown 21.4% since 1997-98, fourth among peer districts. Its growth in the last 10 years has been near the state average in property tax revenue, and state and federal aid.

Figure 8: Trends in per-pupil operations revenue, 2002-03 to 2006-07

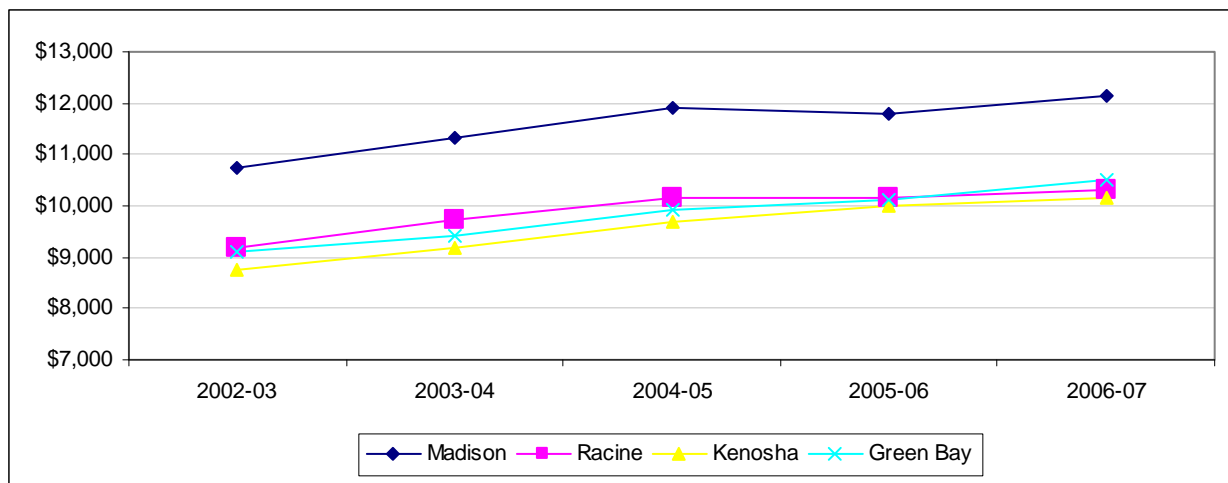


Table 2: Change in aggregate revenue among peer districts, 1997-98 to 2006-07

Finances	Property Tax		State Aid		Federal Aid	
	% change	Rank	% change	Rank	% change	Rank
Madison	21.6%	3	42.0%	7	164.3%	3
Kenosha	41.7%	1	70.8%	1	146.9%	5
Racine	21.4%	4	40.2%	8	87.5%	9
Green Bay	-8.5%	9	65.1%	2	119.3%	7
Appleton	14.9%	6	60.0%	4	346.9%	1
Waukesha	28.4%	2	34.1%	9	153.9%	4
Eau Claire	21.4%	5	26.5%	10	64.0%	10
Janesville	-14.5%	10	58.1%	5	112.3%	8
Oshkosh	10.0%	7	51.8%	6	140.0%	6
Sheboygan	-2.5%	8	62.3%	3	173.1%	2
Milwaukee	30.0%		26.2%		112.1%	
State of Wisconsin	21.5%		38.5%		120.7%	

RUSD ranked sixth in per-pupil operations spending among peer districts in 2006-07, spending \$10,169. It ranked third in both per-pupil instructional and transportation spending. Instructional spending accounts for about two-thirds of RUSD total operations spending.

RUSD per-pupil operations spending has increased 13% since 2002-03, but as **Figure 9** shows, over the past two years the growth has slowed. Most of the growth in per-pupil operations spending occurred between 2002-03 and 2004-05. Between 2004-05 and 2005-06, spending at RUSD decreased 0.3%; between 2005-06 and 2006-07 spending increased 1.5%.

Since 1997-98, RUSD operations spending has increased 35.7%, placing it third among peer districts, behind Appleton and Kenosha. Instructional spending increased 48.2% from 1997-98 to 2006-07 at RUSD, making it fifth among peer districts. Over the past 10 years, transportation spending has increased 33.1%, ranking it seventh among peer districts. Total operations spending statewide increased 18.2% since 1997-98, well below the RUSD rate of increase.

Figure 9: Trends in per-pupil operations spending, 2002-03 to 2006-07

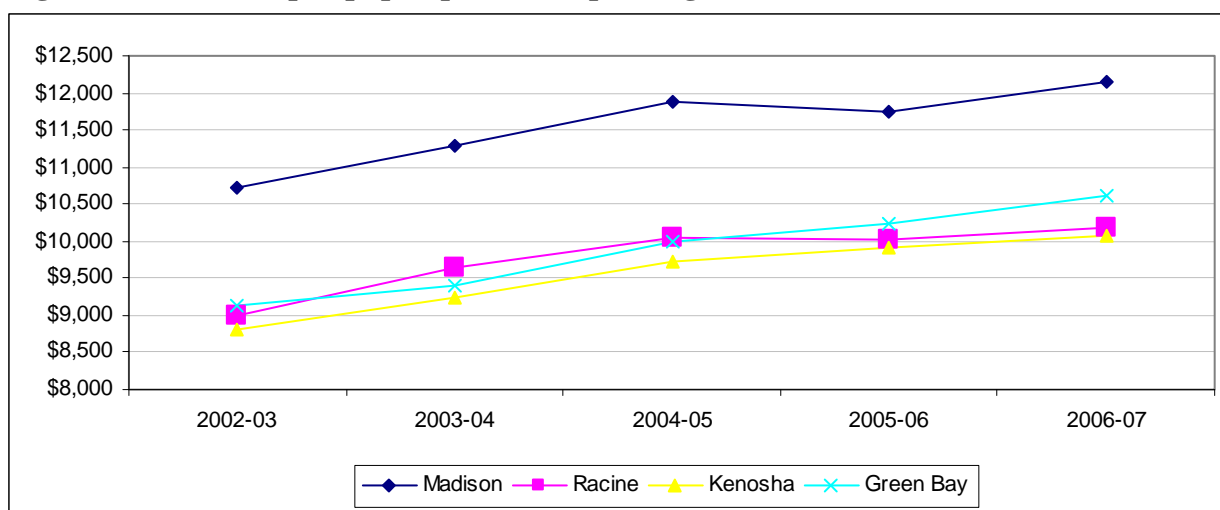


Table 3: Change in aggregate spending among peer districts, 1997-98 to 2006-07

Finances	Operations		Instruction		Pupil Services		Staff Services		General Admin		Building Admin		Transportation	
	Change	Rank	Change	Rank	Change	Rank	Change	Rank	Change	Rank	Change	Rank	Change	Rank
Madison	25.7%	6	29.6%	10	88.8%	5	2.4%	9	12.4%	7	49.9%	9	62.0%	4
Kenosha	39.2%	2	85.1%	1	99.8%	3	35.5%	6	11.4%	8	65.9%	2	70.6%	2
Racine	35.7%	3	48.2%	5	62.1%	8	40.1%	5	38.3%	4	62.5%	4	33.1%	7
Green Bay	23.0%	8	50.5%	4	118.1%	1	102.4%	1	49.9%	2	105.5%	1	73.1%	1
Appleton	50.1%	1	60.5%	3	63.8%	7	23.9%	8	54.8%	1	50.3%	7	63.8%	3
Waukesha	20.6%	9	39.1%	6	55.1%	9	48.9%	3	-4.0%	9	62.5%	3	53.6%	5
Eau Claire	28.1%	5	31.0%	9	45.1%	10	1.9%	10	19.1%	5	50.1%	8	43.1%	6
Janesville	3.8%	10	37.1%	7	105.6%	2	33.2%	7	15.4%	6	52.1%	6	13.3%	9
Oshkosh	25.5%	7	35.5%	8	91.2%	4	49.7%	2	-9.9%	10	53.3%	5	9.3%	10
Sheboygan	32.3%	4	61.9%	2	79.2%	6	44.0%	4	48.1%	3	49.1%	10	23.8%	8
Milwaukee	23.9%		19.8%		85.2%		76.1%		46.0%		18.6%		10.9%	
Wisconsin	18.2%		36.7%		64.1%		42.7%		31.3%		41.5%		37.0%	

Staffing

RUSD was seventh among peers in average teacher salary in 2006-07 at \$48,534, but its teachers were paid an average of \$23,726 in fringe benefits, ranking it third. RUSD was fifth in overall average teacher compensation in 2006-07. RUSD average teacher salaries have increased 6.6% in the past four years, same as in Madison. In comparison, Kenosha teacher salaries have increased 16.2% in the past four years; Green Bay's has increased 13.6%.

Since 2002-03 average RUSD teacher benefits have increased almost 20%. In Madison, they've increased 15.6%, while in Green Bay they've gone up 31.1%.

Figure 10: Trends in teacher salaries, 2002-03 to 2006-07

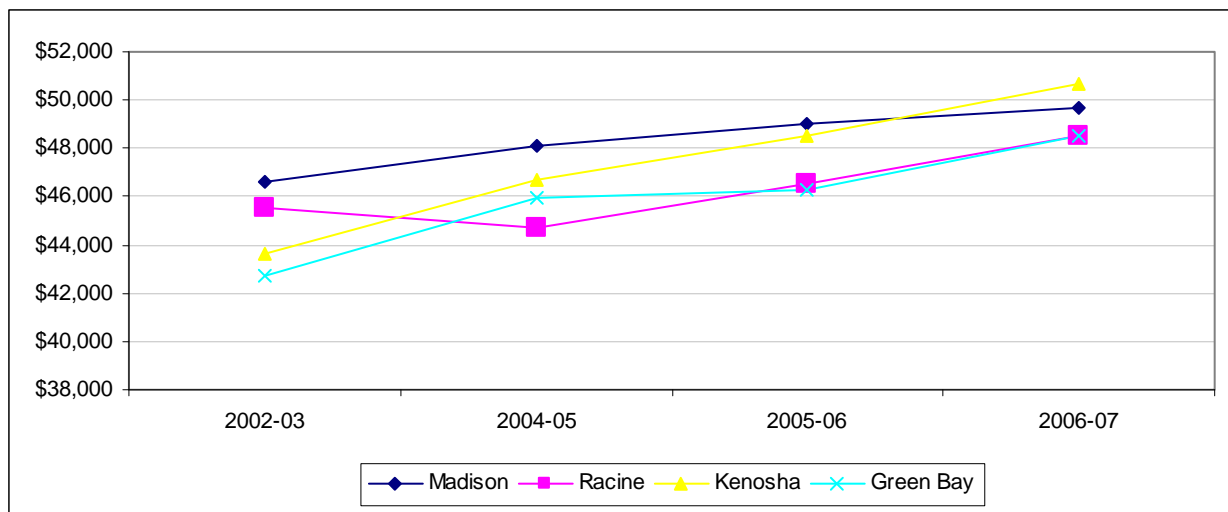
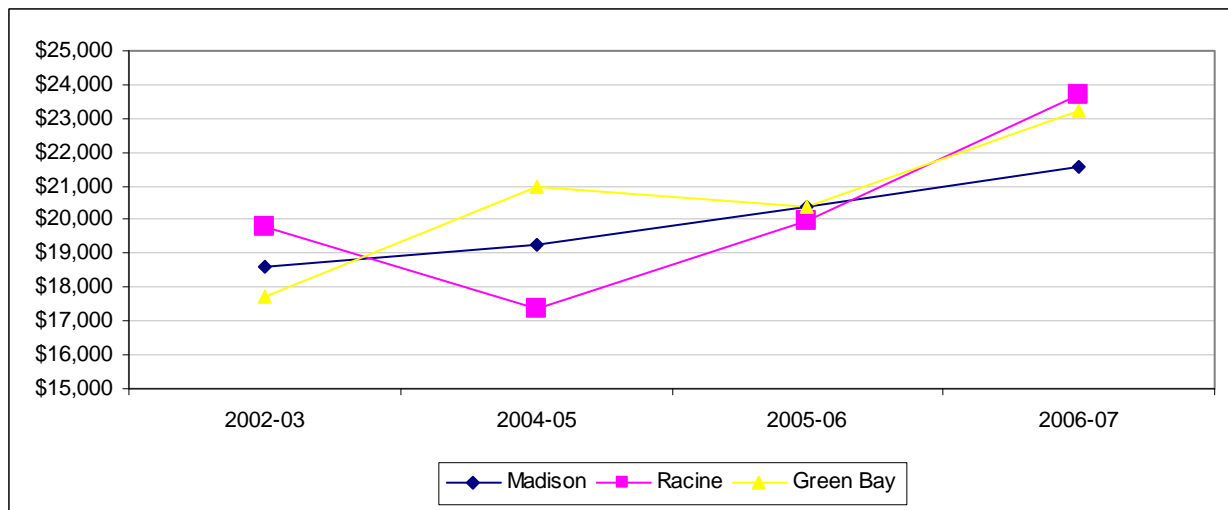
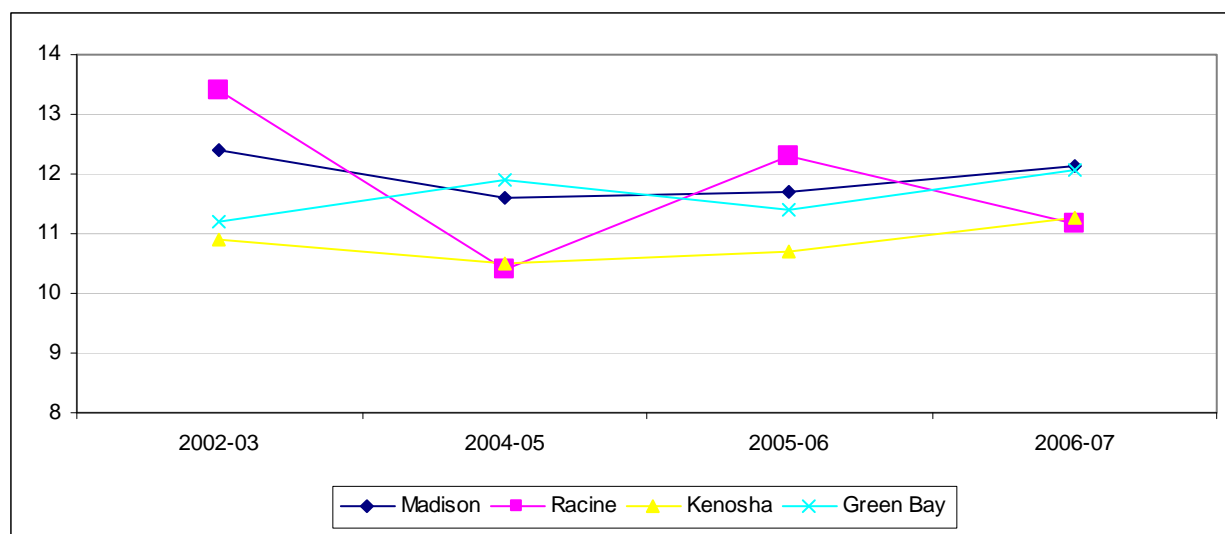


Figure 11: Trends in teacher fringe benefits, 2002-03 to 2006-07



With 11.2 years of experience within the district, RUSD teachers ranked eighth among peers. Only Janesville and Oshkosh ranked lower in 2006-07. As **Figure 12** shows, the average experience of RUSD teachers has decreased in the past four years. Since 2002-03, it has decreased 16.6%, while in Madison, it has decreased 2.1%. In Kenosha, average teacher experience has increased 3.4% since 2002-03; in Green Bay it has increased 7.8%.

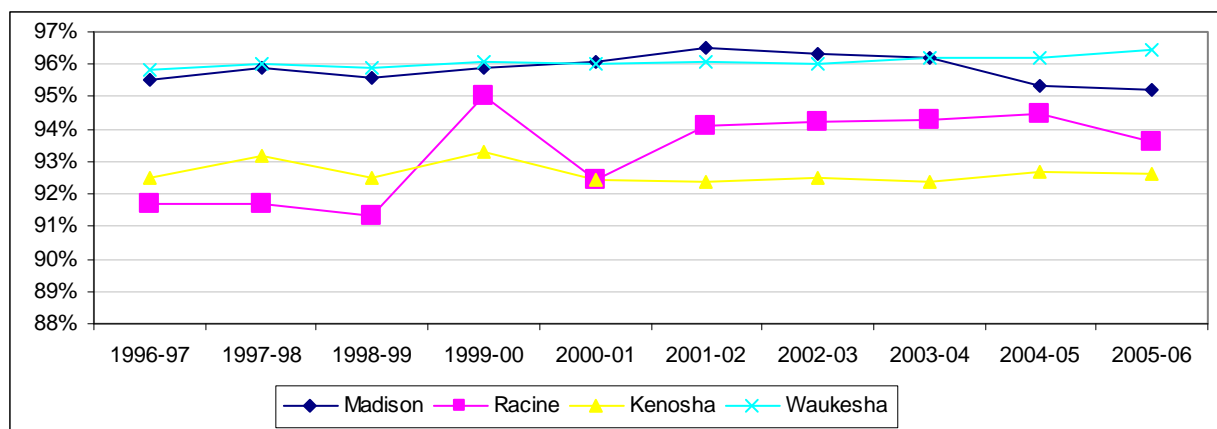
Figure 12: Trends in teacher experience, 2002-03 to 2006-07



Student Engagement

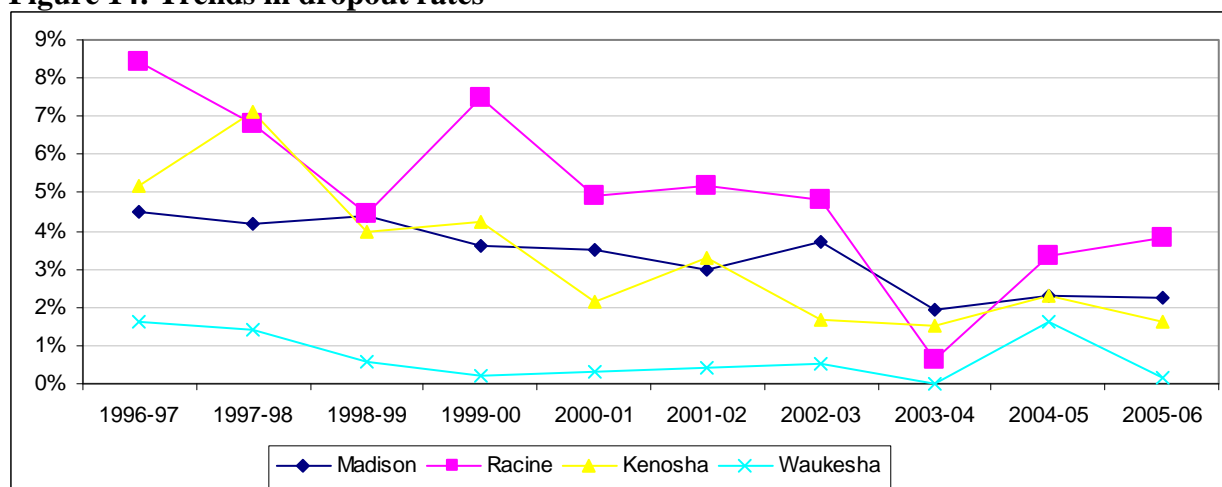
At 93.6%, RUSD ranked eighth in attendance rate among peer districts in 2005-06. Only Kenosha and Green Bay had lower rates. Waukesha had the highest attendance rate, at 96.4%. Statewide, the rate was 94.4%. Since 2001-02, the attendance rate at RUSD has decreased half of a percent; during the same time, Kenosha and Waukesha increased slightly. Madison has seen a decrease in its rate of 1.3% since 2001-02. Over the past 10 years, the RUSD rate has increased 2.1%, while Kenosha and Waukesha have seen their attendance rates increase slightly during the same period. Madison's rate decreased 0.3% since 1996-97.

Figure 13: Trends in attendance rates



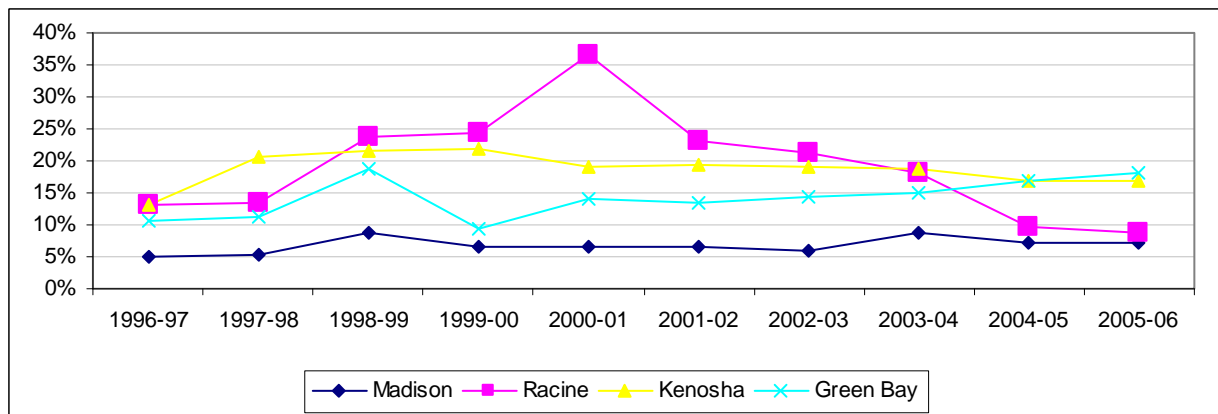
The RUSD dropout rate is less than half of what it was 10 years ago. In 2005-06, its rate was 3.8%, the highest among peer districts. Waukesha had the lowest dropout rate among peers in 2005-06, at 0.2%. For all students in the state, the rate was 1.6%. In 1996-97, the RUSD dropout rate was 8.4%. Since 1996-97, Madison's rate has decreased 49.5%, comparable to the RUSD decline. Waukesha's dropout rate has decreased 90.7% since 1996-97, and Kenosha's has decreased 68.7%. Since 2002-03, the RUSD rate has decreased 26.2%, with a slight decrease during the last year. Kenosha and Waukesha rates have decreased more than 50% since 2002-03. Madison's dropout rate decreased 24.2% from 2002-03 to 2005-06. (In 2003-04, DPI's process for collecting dropout data changed. The incomplete data is the cause for **Figure 14**'s low rates during that year.)

Figure 14: Trends in dropout rates



RUSD has seen a dramatic drop in its habitual truancy rate since 2003-04. In 2005-06, the rate was 8.7%, placing RUSD fifth among peer districts. Janesville had the highest rate, 18.4%, among peer districts in 2005-06. (Looking at **Figure 15**, it appears there was a reporting error in 2000-01 for RUSD.) The RUSD habitual truancy rate decreased 62.5% from 2002-03 to 2005-06. During that same time, Madison’s rate increased 9.5%. Kenosha’s rate has decreased 13.3% over the past five years; Green Bay’s rate increased 34.1% from 2002-03 to 2005-06. In the past 10 years, the RUSD habitual truancy rate has decreased 33.5%, while Madison, Kenosha, and Green Bay’s rates have all increased from 1996-97 to 2005-06.

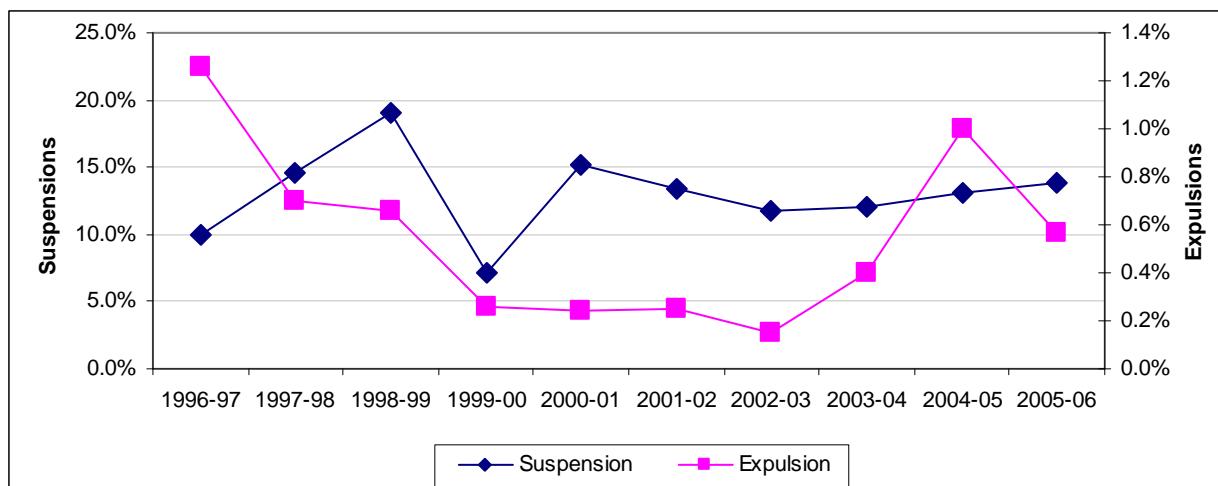
Figure 15: Trends in habitual truancy



The percentage of students suspended in RUSD went from 13.1% in 2004-05 to 13.9% in 2005-06. RUSD had the highest suspension rate among peers in 2005-06. **Figure 16** shows that the rate at RUSD had remained fairly flat for the past five years. In 1996-97, the first year of this report, the RUSD suspension rate was 9.9%.

RUSD had the highest expulsion rate among peer in 2005-06 when 120 students were expelled, about 60% of the number the year before. As shown in **Figure 16**, between 2002-03 and 2004-05, expulsions in RUSD showed a sharp increase. The expulsion rate decreased from 2004-05 to 2005-06, but was still above the 2003-04 rate.

Figure 16: RUSD trends in out-of-school suspension and expulsion rates



Student Achievement

The Wisconsin Knowledge and Concepts Exam (WKCE) exam is now administered annually to all 3rd, 4th, 5th, 6th, 7th, 8th, and 10th grade students. The 2005-06 school year was the first year that the WKCE was administered to students in 3rd, 5th, 6th, and 7th grades. In these grades, students are only tested in reading and math, but in the 4th, 8th, and 10th grades students are tested in reading math, language arts, science, and social studies. The 3rd grade WKCE replaced the Wisconsin Reading and Concepts Test (WRCT), which is no longer administered. Historical comparison can only be made on the 4th, 8th and 10th grade tests due to this change in exams and can only be made back to the 2002-03 school year because of changes in the exam format.

In 2006-07, 69.8% of 3rd graders at RUSD were at or above proficient reading on the WKCE, ranking the district ninth among peers. The 2006-07 score for RUSD is almost four percentage points higher than in 2005-06. Throughout the state, 81% of 3rd graders scored at or above proficient in 2006-07. Appleton had the highest percentage at or above proficient among peer districts, 84% in 2006-07. Only Green Bay had a lower percentage at or above proficient.

Sixty-nine percent of 4th graders were at or above proficient in reading at RSUD in 2006-07, making it last among peers. About 82% of 4th graders in the state were at or above proficient in the WKCE. Eau Claire had the highest percentage of 4th graders at or above proficient, 86%, among peers in 2006-07. At Kenosha, 81% of 4th graders were at or above proficient in 2006-07. Over the past five years, RUSD has shown a steady decline in the percentage of 4th graders at or above proficient in reading. In 2002-03, 77% of 4th graders at RUSD were at or above proficient in reading, about eight percentage points higher than in 2006-07. In comparison, Kenosha's 4th graders have been fairly consistent with 80% at or above proficient in 2002-03 and 81% in 2006-07. In the past year, the percentage of RUSD 4th graders at or above proficient in reading dropped four percentage points.

Figure 17: 3rd grade reading score trends, percent proficient or advanced

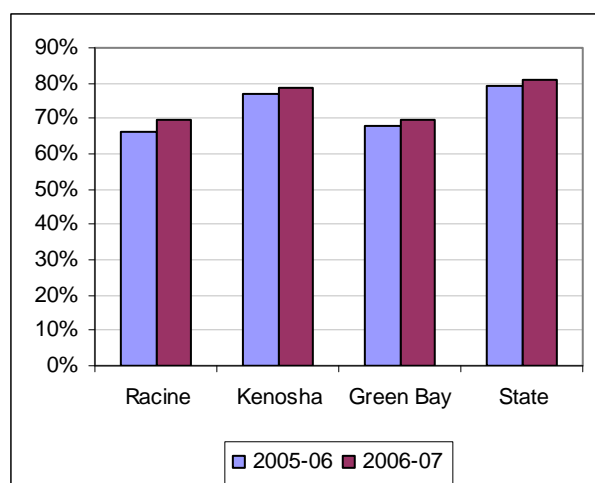


Figure 18: 4th grade reading score trends, percent proficient or advanced

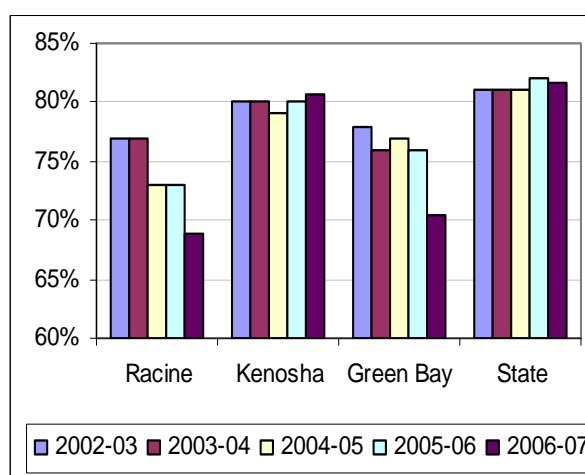
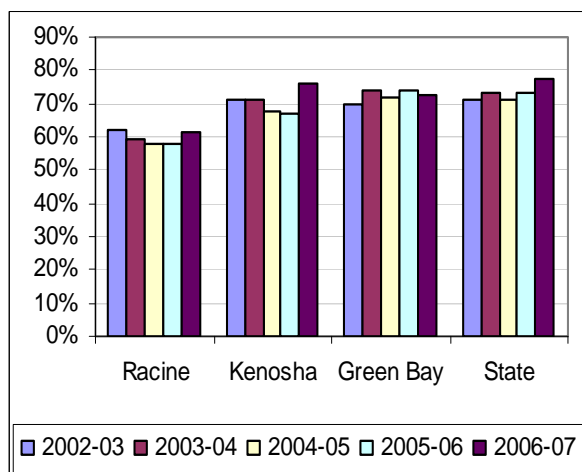


Figure 19: 4th grade math score trends, percent proficient or advanced



In 2006-07, 61.5% of RUSD 4th graders were at or above proficient in math, last among peer districts. Next to last among was Green Bay 4th graders with 72.5%, about 11 percentage points higher than RUSD. Janesville had the highest percentage of 4th graders at or above proficient in math, 81.8%, in 2006-07. About 78% of 4th graders in the state were at or above proficient in math.

In the last year, the percentage of RUSD 4th graders at or above proficient in math went up about four percentage points. In 2002-03, the percentage of RUSD 4th graders at or above proficient in math was 62%, the same as 2006-07. The percentage Kenosha 4th graders at or above proficient went from 80% in 2002-03 to 81% in 2006-07. Statewide, the percentage of 4th graders at or

above proficient was 81% in 2002-03.

In RUSD, 70% of 8th graders were at or above proficient in reading in 2006-07, last among peer districts and about eight percentage points lower than Green Bay’s percentage which was ninth among peers. In the state, about 84% of 8th graders were at or above proficient in reading in 2006-07. Not much has changed in the RUSD 8th grade percentage since 2002-03. Then, 69% of 8th graders were at or proficient, one percentage point less than in 2006-07. The same holds true for Kenosha, Green Bay and the state. The 2002-03 rates were nearly the same as in 2006-07.

In 2006-07, about 55% of RUSD 8th graders were at or above proficient in math, last among peers and more than 15 percentage points below the next lowest district, Janesville. About 75% of state 8th graders were at or above proficient in 2006-07. RUSD has seen no improvement in the percentage of 8th graders at or proficient in math since 2002-03. In comparison, the percentage of Kenosha 8th graders at or above proficient went from 68% in 2002-03 to 72% in 2006-07.

Figure 20: 8th grade reading score trends, percent proficient or advanced

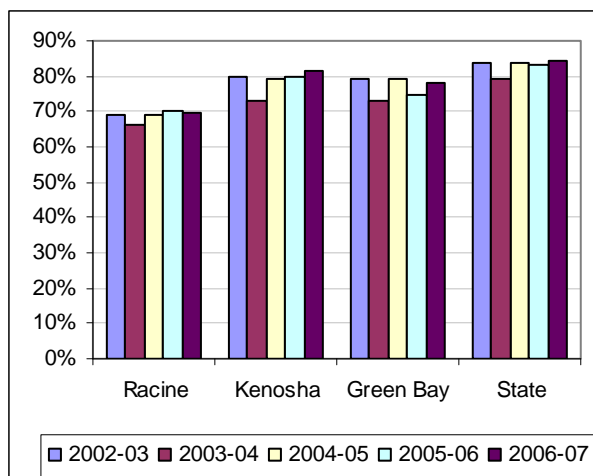
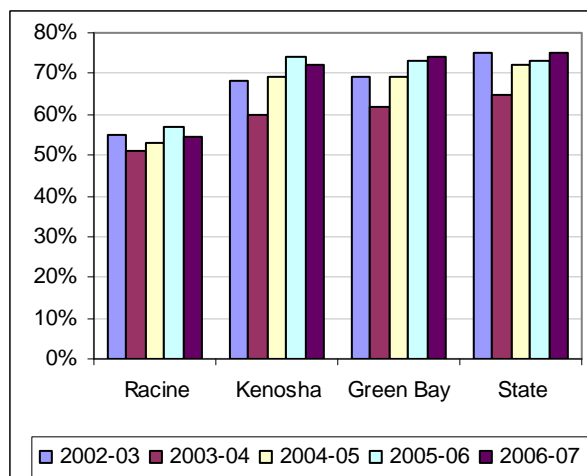


Figure 21: 8th grade math score trends, percent proficient or advanced



The percentage of 10th graders at or above proficient in reading has steadily declined from 2002-03 to 2006-07. In 2006-07, 52% of RUSD 10th graders were at or above proficient, last among peers and almost 14 percentage points lower than Madison, which ranked ninth. The percentage of 10th graders performing at or above proficient in reading in both Green Bay and Kenosha has remained steady since 2002-03. In 2006-07, 72% of state 10th graders were at or above proficient.

RUSD experienced a six percentage point drop in the percentage of 10th graders at or above proficient in math from 2005-06 to 2006-07. In 2006-07, 48% of sophomores were at or above proficient, last among peers. Kenosha ranked ninth among peers in the percentage at or above proficient, at 62%. Statewide, 72% of 10th graders were at or above proficient in math in 2006-07. In 2002-03, 52% of RUSD 10th graders were at that level in math.

Figure 22: 10th grade reading score trends, percent proficient or advanced

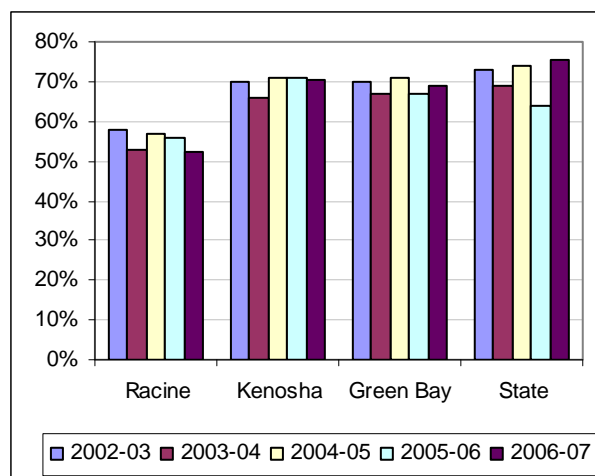


Figure 23: 10th grade math score trends, percent proficient or advanced

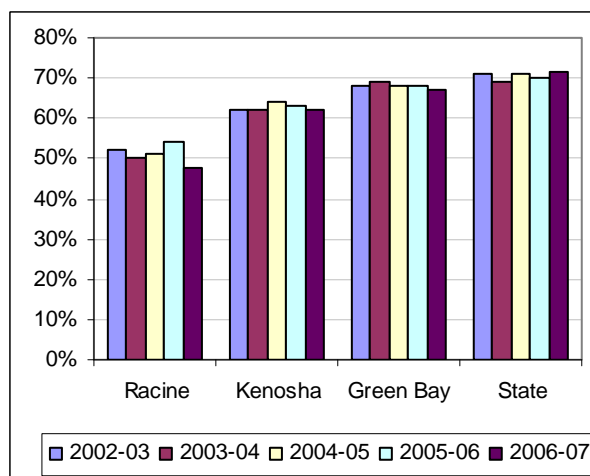


Table 4: 4th-6th grade cohort reading analysis, 2004-05 to 2006-07

Performance	Cohort reading scores				
	4th grade 2004-05	5th grade 2005-06	6th grade 2006-07	4th to 5th	5th to 6th
Madison	79.7%	79.8%	82.0%	0.1	2.2
Kenosha	78.8%	79.6%	82.7%	0.8	3.2
Racine	73.0%	70.2%	72.3%	-2.8	2.1
Green Bay	76.7%	75.2%	76.1%	-1.5	0.9
Appleton	84.8%	85.4%	87.9%	0.6	2.5
Waukesha	87.0%	86.2%	90.6%	-0.8	4.4
Eau Claire	83.4%	86.9%	88.2%	3.4	1.3
Janesville	85.2%	84.9%	84.7%	-0.2	-0.2
Oshkosh	84.1%	86.0%	87.4%	1.8	1.5
Sheboygan	80.1%	77.9%	79.9%	-2.2	2.1
Milwaukee	60.9%	60.7%	61.8%	-0.2	1.1
State of Wisconsin	81.0%	81.6%	85.1%	0.6	3.4

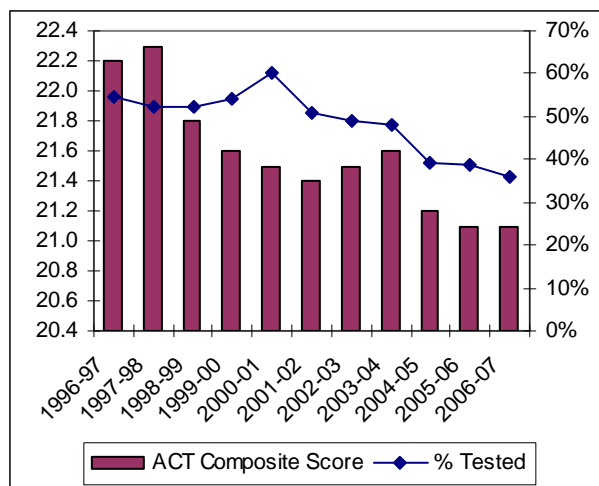
Table 4 (see previous page) shows the proficient or advanced reading scores for the 2004-05 4th grade cohort. From 4th to 5th grade, RUSD was one of five peer districts to decrease in the percentage of students at or above proficient on the WKCE reading exam. The 5th grade percentage in 2005-06 was 2.8 percentage points less than the percentage in the 4th grade in 2004-05. In 2006-07, 72.3% of RUSD 6th graders were at or above proficient in reading, 2.1 percentage points more than the 5th grade percentage in 2005-06. Only one peer district, Janesville, had a decrease in the percentage at or above proficient between 5th and 6th grade.

In 2006-07, the percentage of RUSD students taking the ACT dropped, with 36% of students taking the exam. One year earlier, 38.9% of RUSD seniors took the exam. In 2006-07, the average RUSD composite score was 21.1 points (out of 36), the same as on the 2005-06 exam. RUSD ranked 10th among peers in composite ACT scores.

Advanced Placement (AP) and International Baccalaureate (IB) classes give students the opportunity to earn college level credit in high school. In 2006, 3.2% of RUSD high school students passed either an AP or IB exam, ranking the district 10th among peers. The prior year, 2.6% of students passed a college-level exam. The number of exams administered to RUSD students also decreased, from 365 to 220. Seventy-five percent of the IB tests taken in RUSD were passed in 2005-06, while only 51% of the AP tests taken were passed. The combined percentage of 57.3% put RUSD lower than other peers.

RUSD high school completion rate decreased about three percentage points from 2004-05 to 2005-06 to 71.3% of the students receiving a diploma. The district continued to rank last among peers in this category. Only three of the 10 peer districts - RUSD, Appleton, and Kenosha - had a decrease in their high school completion rate from 2004-05 to 2005-06. RUSD had the largest one-year percentage point decrease in its high school completion rate among peer districts. The high school completion rate is calculated by dividing the number of graduates by the number of students expected to graduate. The number of students expected to graduate includes: the dropouts over four years, students reaching the maximum age and the high school completers. When comparing the dropout rate used in this report to the graduation rate they do not equal 100%. This is because the dropout rate is only the dropouts from that particular year and the graduation rate uses dropouts for the four years of high school.

Figure 24: Trend in ACT composite scores, 1996-97 through 2006-07, RUSD



10th annual comparative analysis of the Racine Unified School District

Appendix A-- Definitions of terms

This report is based on information supplied periodically by school districts to the Wisconsin Department of Public Instruction (DPI). Enrollment and financial data, and 3rd, 4th, 5th, 6th, 7th, 8th, and 10th grade test scores are current as of 2006-07. Other information on performance, attendance, and discipline is from 2005-06.

Definitions of measurements:

ACT scores: ACT data are reported for the class of 2006. Most students take the test to fulfill admissions requirements for colleges and universities. If a student has taken the test more than once (in either his/her junior or senior year), the most recent score was reported. The maximum possible score on any individual section is 36. English, math, reading, and science reasoning are the four test sections. The composite score is the weighted average of the subject area scores, out of a possible 36. The percentage of students tested is the number of students tested divided by 12th grade enrollment.

Advanced placement tests: If a high school student receives a score of 3, 4, or 5 on an AP exam, he or she passes the test and may receive college credit. Students can take 29 exams in 16 fields. Schools may or may not offer formal courses in preparation for these exams. Enrollment data are used to calculate the percentage of students taking the tests.

Attendance: Based upon the state-required 180 school days, and with attendance taken twice daily, the attendance rate (expressed as a percentage) is computed by dividing the aggregate number of days students are in school by the aggregate number of possible student days in the school year. An attendance rate of 95% means that five out of every 100 students enrolled were not in school on a typical day.

Dropouts: According to the DPI, the definition of a dropout is a student who was enrolled in school at some time during the reported school year, was not enrolled at the beginning of the following school year, has not graduated from high school or completed a state or district-approved educational program, and does not meet any of the following exclusionary conditions: transfer to another public school district, private school, or state- or district-approved educational program; temporary absence due to expulsion, suspension, or school-approved illness; or death. Starting in 2003-04, the dropout rate is the number of students who dropped out during the school term divided by the total number of students who were expected to complete the school term in that school or district. The latter number may be more or less than the enrollment due to student transfers in and out after the fall enrollment count date. "Total number of students expected to complete the school term" is the denominator used to calculate all dropout rates and is the sum of students who actually completed the school term plus dropouts.

Enrollment: Two types of enrollment data are important: 1) the enrollment as of the third Friday in September, a head count of children enrolled in school on a specific day, and 2) the full-time equivalent enrollment, which accounts for pre-school and kindergarten children in school for only a portion of the day to calculate state aid and other financial data. In this report, head count enrollments are reported in the tables, but full-time equivalents are the basis for calculation of spending and revenue per pupil.

Expulsions: Expulsion is the removal of a student from school permanently. Expulsions are recorded in terms of students expelled, as well as days lost due to expulsion. Expulsion rates are calculated by dividing the number of expelled students by the pre-kindergarten through 12th grade enrollment of the school district.

4th, 8th, and 10th grade knowledge and concepts tests: These tests measure student knowledge in the areas of reading, language arts, mathematics, science, and social studies. Prior to 2002-03, the scores were the national percentiles, which corresponded to the raw scores. Since 2002-03, the tests were no longer normalized to a national standard.

3rd, 5th, 6th and 7th grade knowledge and concepts tests: These tests measure student knowledge in the areas of reading and mathematics. The 2005-06 school year was the first year in which knowledge and concepts examinations were administered to students in the 3rd, 5th, 6th, and 7th grades. As a result, historical comparisons are not available for these grades.

Free lunch eligibility: This is the only available income measure of pupil families. It is the percentage of pupils who qualify under federal rules for free or reduced-price lunch, and, thus, roughly measures the percentage of children from low-income families in a school.

Graduation rate: Starting in 2003-04, graduation rates are defined as the number of graduates divided by an estimate of the total cohort group measured from the beginning of high school, expressed as a percentage. This cohort group includes graduates, other high school graduates, and other students who reached the age 21 in the school year. It also includes cohort dropouts over four years. Prior to 2003-04, it was calculated by taking the number of graduates divided by the number of graduates plus dropouts over four years, expressed as a percentage.

Habitual truancy: According to DPI, the definition of a habitual truant is a student who is absent from school without an acceptable excuse for part or all of five or more days on which school is held during a semester. The habitual truancy rate (expressed as a percentage) is the number of habitual truants divided by kindergarten through 12th grade enrollment counted on the third Friday in September.

Income per pupil: Based on state tax returns, this is a calculation of aggregate earned income among residents of each school district divided by the district full-time enrollment (FTE). The result is an indicator of community wealth that takes into account both the relative number of children in the community and the proportion of district children who attend public schools.

Income per return: The aggregate income that was reported to the Wisconsin Department of Revenue divided by the number of returns filed.

Property taxes: An equalized school tax rate, which makes it possible to compare the school tax effort from one community to another. The equalized rate is the amount of money property taxpayers were charged in December 2006 (for the 2005-06 school year) for each \$1,000 of property value at full market value.

Property value per pupil: Another measure of community wealth, this relates directly to Wisconsin's formula for calculating state aid to school districts. The numbers represent the tax base of the school district as measured by equalized taxable property values as of 2006-07. It is a reliable measurement for purposes of comparing the property wealth of school districts.

Retention rates: Retentions are students who, by local district policy, must either repeat a grade or need additional time to complete the prescribed program. The number of retentions is reported for all grades except pre-kindergarten. The retention rate is the number of retentions divided by kindergarten through 12th grade enrollment.

Revenue per pupil: Each autumn, school districts file reports on budgeted revenue and spending. Data in this report were taken from those reports filed in fall of 2006. The two principal sources of revenue for schools – property taxes and state aid – are reported on a per-pupil basis (using full-time equivalent enrollments). Also reported are the per-pupil revenues from federal sources.

Spending per pupil: Operations spending per pupil refers to the cost of running the system on a daily basis. It is more useful to look at operations spending for comparative purposes because capital spending and debt service can vary dramatically from year to year (depending on whether a district is building new schools). Operations spending is divided into six categories for the purposes of this report:

- Instruction – Direct spending on educational programs that generally take place in the classroom.
- Pupil services – Wide variety of services outside the classroom, such as guidance counseling, social work, curriculum development, libraries, vocational services, and extracurricular activities.
- Instructional staff services – Includes spending on improvement to instructional staff, library media, and supervision and coordination of staff.
- General administration – Central office expenses related to district administration, such as the superintendent's office and the school board.
- Building administration – Expenses related to the administration of each school building, primarily the principal's office.
- Transportation.
- Other – all expenses not included in the above categories, including community recreation programs, staff services, maintenance, utilities, and other overhead functions.

Suspensions: Suspension is an administrative action that temporarily excludes a student from school. Suspensions are recorded three ways: 1) the number of individual students suspended at least once during the school year; 2) the number of suspensions (a larger number because some students are suspended more than once); and 3) the number of days lost because of suspension. This report measures suspensions as the number of days lost because of suspension. The measurement is reported as a percentage of total possible school days lost to suspension.

10th annual comparative analysis of the Racine Unified School District

Appendix B - Peer district ranking tables

Table 5: Enrollment by race/ethnicity, 2006-07

<u>Enrollment</u>	Overall		Racial composition								
	2006-07	1-year change	White	African American	Asian	Hispanic	Indian	% black	Rank	% minority	Rank
Madison	24,755	1.2%	13,343	5,534	2,554	3,159	165	22.4%	2	46.1%	2
Kenosha	22,482	1.6%	14,471	3,571	393	3,961	86	15.9%	3	35.6%	3
Racine	21,696	2.5%	11,254	5,786	328	4,254	74	26.7%	1	48.1%	1
Green Bay	20,070	-1.2%	13,134	1,208	1,606	3,135	987	6.0%	5	34.6%	5
Appleton	15,243	0.2%	12,149	511	1,626	831	126	3.4%	9	20.3%	6
Waukesha	13,577	-0.2%	10,861	491	418	1,739	68	3.6%	6	20.0%	7
Eau Claire	10,861	0.5%	9,281	230	1,039	187	124	2.1%	10	14.5%	9
Janesville	10,555	-0.3%	8,932	641	223	709	50	6.1%	4	15.4%	8
Oshkosh	10,277	0.5%	8,830	359	751	279	58	3.5%	8	14.1%	10
Sheboygan	10,238	-0.4%	6,662	362	1,829	1,314	71	3.5%	7	34.9%	4
Milwaukee	89,912	-2.7%	14,344	51,914	4,005	18,921	728	57.7%		84.0%	
State of Wisconsin	876,700	0.2%	677,327	92,016	31,403	63,130	12,824	10.5%		22.7%	

Table 6: Enrollment by race/ethnicity and grade, 2006-07

Racine	PK	KG	01	02	03	04	05	06	07	08	09	10	11	12	Total
Asian	19	27	31	17	24	22	26	26	26	18	17	25	22	28	328
Black	322	429	428	400	374	413	409	390	442	440	424	414	410	491	5,786
Hispanic	270	402	412	349	350	338	297	269	265	264	282	257	233	266	4,254
Indian	3	7	6	4	8	6	4	4	2	7	7	4	5	7	74
White	623	688	719	723	767	739	712	722	689	778	930	1,027	1,048	1,089	11,254
Total	1,237	1,553	1,596	1,493	1,523	1,518	1,448	1,411	1,424	1,507	1,660	1,727	1,718	1,881	21,696
Kenosha	PK	KG	01	02	03	04	05	06	07	08	09	10	11	12	Total
Asian	5	29	33	23	30	30	33	26	30	25	28	30	43	28	393
Black	177	256	296	274	272	285	259	281	275	251	346	254	224	121	3,571
Hispanic	223	395	346	369	315	269	287	280	288	250	333	233	242	131	3,961
Indian	2	7	5	3	7	2	6	5	10	8	9	11	6	5	86
White	389	1,017	1,001	1,045	1,003	940	1,010	997	1,066	1,086	1,389	1,154	1,338	1,036	14,471
Total	796	1,704	1,681	1,714	1,627	1,526	1,595	1,589	1,669	1,620	2,105	1,682	1,853	1,321	22,482
Wisconsin	PK	KG	01	02	03	04	05	06	07	08	09	10	11	12	Total
Asian	1,216	2,263	2,219	2,150	2,091	2,155	2,230	2,235	2,262	2,342	2,474	2,621	2,679	2,466	31,403
Black	5,279	6,219	6,450	6,506	6,518	6,403	6,360	6,598	6,986	6,920	9,038	6,785	6,675	5,279	92,016
Hispanic	3,919	5,727	5,452	5,249	4,993	4,766	4,556	4,459	4,208	4,178	4,848	3,861	3,724	3,190	63,130
Indian	443	813	850	884	854	830	862	864	974	1,013	1,272	1,106	1,076	983	12,824
White	22,964	45,386	45,725	44,914	45,098	45,202	46,253	47,101	49,508	51,153	57,650	58,052	59,540	58,781	677,327
Total	33,821	60,408	60,696	59,703	59,554	59,356	60,261	61,257	63,938	65,606	75,282	72,425	73,694	70,699	876,700

Table 7: Educational options, 2006-07

	Private school			Charter school			Home school		
	enrollment	% of public enrollment	Rank	enrollment	% of public enrollment	Rank	enrollment	% of public enrollment	Rank
Madison	4,377	17.7%	5	385	1.6%	7	447	1.8%	5
Kenosha	3,043	13.5%	9	370	1.6%	6	426	1.9%	3
Racine	4,134	19.1%	3	1,011	4.7%	3	526	2.4%	1
21st Century Charter School				443	2.0%				
Green Bay	3,932	19.6%	2	0	0.0%	10	266	1.3%	10
Appleton	3,228	21.2%	1	1,629	10.7%	1	230	1.5%	9
Waukesha	2,582	19.0%	4	827	6.1%	2	238	1.8%	6
Eau Claire	1,529	14.1%	7	267	2.5%	5	231	2.1%	2
Janesville	1,398	13.2%	10	112	1.1%	9	184	1.7%	7
Oshkosh	1,428	13.9%	8	349	3.4%	4	192	1.9%	4
Sheboygan	1,647	16.1%	6	128	1.3%	8	162	1.6%	8
Milwaukee	27,705	30.8%		10,869	12.1%		804	0.9%	
Non-MPS Charters				4,516	5.0%				
Wisconsin	133,419	15.2%			0.0%		20,078	2.3%	

Table 8: Revenue per pupil, 2006-07

<u>Finances</u>	Property tax			State aid			Federal aid			Operations revenue	
	op revenue	% of total op revenue	Rank	aid	% of total op revenue	Rank	aid	% of total op revenue	Rank	revenue	Rank
Madison	\$7,781	64.2%	1	\$3,360	27.7%	10	\$560	4.6%	4	\$12,126	1
Kenosha	\$2,738	27.0%	5	\$6,538	64.4%	5	\$639	6.3%	2	\$10,159	7
Racine	\$2,636	25.6%	8	\$6,734	65.4%	4	\$622	6.0%	3	\$10,300	6
Green Bay	\$2,690	25.6%	6	\$6,854	65.1%	3	\$737	7.0%	1	\$10,523	4
Appleton	\$2,787	27.8%	4	\$6,308	62.8%	6	\$431	4.3%	8	\$10,041	8
Waukesha	\$5,127	47.9%	2	\$4,521	42.2%	9	\$365	3.4%	10	\$10,705	3
Eau Claire	\$3,492	33.7%	3	\$6,050	58.3%	8	\$500	4.8%	6	\$10,371	5
Janesville	\$2,354	23.7%	10	\$6,879	69.1%	2	\$409	4.1%	9	\$9,952	9
Oshkosh	\$2,655	27.4%	7	\$6,304	65.1%	7	\$450	4.7%	7	\$9,678	10
Sheboygan	\$2,636	23.9%	9	\$7,523	68.2%	1	\$527	4.8%	5	\$11,031	2
Milwaukee	\$2,250	19.1%		\$7,750	65.8%		\$1,621	13.8%		\$11,780	
Wisconsin	\$3,614	34.2%		\$5,926	56.1%		\$553	5.2%		\$10,564	

Table 9: Expenditures per pupil, 2006-07

<u>Finances</u>	Total operations spending		Instructional		General administration	Building administration	Transportation
	Instruction	Pupil services	staff services				
Madison	\$12,163	\$7,184	\$777	\$589	\$87	\$679	\$392
Kenosha	\$10,072	\$6,632	\$613	\$538	\$50	\$515	\$265
Racine	\$10,169	\$6,811	\$500	\$402	\$76	\$547	\$443
Green Bay	\$10,602	\$6,717	\$674	\$622	\$91	\$702	\$317
Appleton	\$10,073	\$6,667	\$477	\$420	\$80	\$516	\$190
Waukesha	\$10,483	\$6,625	\$480	\$365	\$70	\$648	\$450
Eau Claire	\$10,515	\$6,267	\$387	\$469	\$104	\$599	\$452
Janesville	\$9,867	\$6,295	\$639	\$441	\$74	\$442	\$166
Oshkosh	\$9,752	\$6,383	\$497	\$392	\$39	\$468	\$231
Sheboygan	\$10,985	\$7,507	\$599	\$436	\$155	\$572	\$238
Milwaukee	\$11,066	\$6,526	\$594	\$752	\$229	\$627	\$642
Wisconsin	\$10,288	\$6,324	\$482	\$527	\$198	\$536	\$449

<u>Finances</u>	Total operations spending		Instructional		General administration	Building administration	Transportation
	Instruction	Pupil services	staff services				
Madison	1	2	1	2	4	2	4
Kenosha	8	6	4	3	9	8	6
Racine	6	3	6	8	6	6	3
Green Bay	3	4	2	1	3	1	5
Appleton	7	5	9	7	5	7	9
Waukesha	5	7	8	10	8	3	2
Eau Claire	4	10	10	4	2	4	1
Janesville	9	9	3	5	7	10	10
Oshkosh	10	8	7	9	10	9	8
Sheboygan	2	1	5	6	1	5	7

Table 10: Average teacher compensation, 2006-07

<u>Staffing</u>	Salary		Fringe		Total compensation	
		Rank		Rank		Rank
Madison	\$49,655	5	\$21,549	9	\$71,204	8
Kenosha	\$50,670	4	\$42,016	1	\$92,686	1
Racine	\$48,534	7	\$23,726	3	\$72,260	5
Green Bay	\$48,501	8	\$23,208	5	\$71,709	6
Appleton	\$51,389	3	\$23,576	4	\$74,964	4
Waukesha	\$56,956	1	\$28,221	2	\$85,177	2
Eau Claire	\$48,632	6	\$23,045	6	\$71,677	7
Janesville	\$46,638	10	\$21,896	7	\$68,533	9
Oshkosh	\$46,869	9	\$21,642	8	\$68,511	10
Sheboygan	\$54,074	2	\$21,502	10	\$75,576	3
Milwaukee	\$52,047		\$26,663		\$78,710	
State of Wisconsin	\$48,223		\$23,890		\$72,112	

Table 11: Average teacher experience, 2006-07

Staffing	Local experience		Total experience	
		Rank		Rank
Madison	12.1	3	14.8	5
Kenosha	11.3	7	12.6	9
Racine	11.2	8	12.9	8
Green Bay	12.1	4	14.8	4
Appleton	12.0	6	15.1	3
Waukesha	15.6	1	17.5	1
Eau Claire	12.3	2	15.3	2
Janesville	11.0	9	13.3	7
Oshkosh	10.7	10	11.1	10
Sheboygan	12.0	5	13.8	6
Milwaukee	8.3		8.6	
State of Wisconsin	12.2		14.6	

Table 12: Attendance, truancy, and dropout rate, 2005-06

Engagement	Attendance		Habitual truancy			High school dropouts		
	Rate	Rank	Truants	Percent	Rank	Dropouts	Percent	Rank
Madison	95.2%	5	1,775	7.3%	6	275	2.27%	4
Kenosha	92.6%	9	3,563	16.7%	3	168	1.63%	5
Racine	93.6%	8	1,789	8.7%	5	391	3.84%	1
Green Bay	92.1%	10	3,585	18.1%	2	336	3.42%	2
Appleton	96.1%	2	699	4.7%	7	47	0.63%	9
Waukesha	96.4%	1	145	1.1%	10	10	0.15%	10
Eau Claire	94.6%	6	1,050	10.2%	4	38	0.73%	8
Janesville	95.7%	3	1,902	18.4%	1	134	2.49%	3
Oshkosh	95.4%	4	344	3.4%	9	72	1.42%	6
Sheboygan	94.5%	7	363	3.8%	8	53	1.12%	7
Milwaukee	88.6%		41,621	49.0%		2,793	6.7%	
State of Wisconsin	94.4%		82,180	9.7%		6,962	1.6%	

Table 13: Suspensions and expulsions, 2005-06

Behavior	Suspensions			Expulsions		
	Students	Percent	Rank	Students	Percent	Rank
Madison	2,394	9.8%	3	47	0.19%	4
Kenosha	2,587	11.7%	2	38	0.17%	5
Racine	2,953	13.9%	1	120	0.57%	1
Green Bay	1,513	7.4%	4	10	0.05%	8
Appleton	549	3.6%	8	7	0.05%	9
Waukesha	523	3.8%	6	28	0.21%	3
Eau Claire	400	3.7%	7	15	0.14%	6
Janesville	699	6.6%	5	58	0.55%	2
Oshkosh	368	3.6%	9	13	0.13%	7
Sheboygan	354	3.4%	10	1	0.01%	10
Milwaukee	24,060	26.0%		395	0.43%	
State of Wisconsin	63,089	7.2%		1,809	0.21%	

Table 14: 3rd grade WKCE reading and math scores, 2006-07

Performance	3rd grade scores									
	Reading					Math				
	Minimum	Basic	Proficient	Advanced	Rank	Minimum	Basic	Proficient	Advanced	Rank
Madison	7.1%	15.1%	32.1%	43.3%	8	18.4%	8.6%	33.6%	37.5%	6
Kenosha	5.3%	15.4%	37.3%	41.4%	5	18.2%	10.0%	40.0%	31.1%	7
Racine	7.4%	19.0%	39.1%	30.7%	9	29.1%	12.4%	39.7%	16.0%	10
Green Bay	5.2%	17.3%	36.4%	33.3%	10	14.9%	9.6%	43.6%	29.4%	4
Appleton	2.4%	11.3%	36.2%	47.3%	1	15.9%	10.8%	36.2%	35.7%	5
Waukesha	2.8%	13.2%	30.3%	49.9%	3	15.3%	10.0%	36.6%	34.2%	8
Eau Claire	3.3%	10.7%	35.2%	47.8%	2	18.0%	9.5%	35.6%	34.3%	9
Janesville	4.8%	14.4%	34.1%	43.0%	6	14.9%	8.9%	39.4%	34.9%	3
Oshkosh	3.9%	13.4%	35.9%	44.1%	4	8.3%	7.1%	43.5%	39.3%	1
Sheboygan	3.1%	16.3%	37.2%	38.8%	7	9.0%	8.6%	43.0%	36.3%	2
Milwaukee	9.5%	23.6%	40.8%	21.2%		38.8%	13.3%	31.7%	13.7%	
Wisconsin	4.1%	12.9%	35.7%	45.1%		15.4%	8.9%	38.4%	35.8%	

Table 15: 4th grade WKCE reading and math scores, 2006-07

Performance	4th grade scores									
	Reading					Math				
	Minimum	Basic	Proficient	Advanced	Rank	Minimum	Basic	Proficient	Advanced	Rank
Madison	7.6%	14.4%	31.3%	45.4%	8	16.9%	8.2%	33.4%	40.7%	8
Kenosha	4.1%	14.2%	42.0%	38.6%	6	12.7%	10.0%	45.6%	30.7%	7
Racine	6.2%	19.5%	42.7%	26.1%	10	22.7%	13.6%	43.6%	17.9%	10
Green Bay	2.9%	14.1%	40.4%	30.1%	9	13.3%	11.0%	42.7%	29.8%	9
Appleton	3.0%	9.9%	35.9%	45.4%	4	11.5%	9.3%	41.1%	36.2%	5
Waukesha	3.0%	8.9%	36.0%	47.8%	2	10.2%	9.1%	45.3%	31.1%	6
Eau Claire	1.6%	10.8%	38.3%	47.3%	1	9.9%	9.1%	44.8%	34.4%	4
Janesville	2.5%	12.0%	41.4%	40.4%	3	7.9%	7.9%	44.1%	37.7%	1
Oshkosh	2.9%	13.0%	41.7%	39.3%	5	8.6%	8.0%	45.9%	34.7%	3
Sheboygan	3.9%	12.9%	40.0%	39.4%	7	8.7%	7.6%	35.7%	45.8%	2
Milwaukee	9.2%	24.5%	42.9%	18.6%		32.1%	13.6%	37.4%	14.2%	
Wisconsin	3.7%	12.1%	39.5%	42.2%		12.1%	8.8%	41.8%	35.7%	

Table 16: 5th grade WKCE reading and math scores, 2006-07

Performance	5th grade scores									
	Reading					Math				
	Minimum	Basic	Proficient	Advanced	Rank	Minimum	Basic	Proficient	Advanced	Rank
Madison	7.1%	12.4%	32.2%	46.5%	8	15.9%	11.9%	31.1%	39.7%	9
Kenosha	4.8%	11.5%	43.8%	39.2%	6	15.7%	12.7%	38.9%	32.0%	8
Racine	8.3%	13.8%	46.6%	28.0%	10	20.6%	15.5%	41.2%	20.5%	10
Green Bay	5.3%	12.6%	40.6%	34.9%	9	14.7%	9.1%	33.0%	41.0%	6
Appleton	3.5%	8.6%	38.0%	47.2%	4	12.0%	10.0%	39.2%	37.9%	3
Waukesha	2.7%	7.5%	38.0%	47.3%	3	11.9%	11.3%	44.3%	28.1%	7
Eau Claire	3.9%	6.3%	40.1%	48.7%	1	12.4%	10.3%	44.2%	32.3%	5
Janesville	2.9%	8.4%	44.9%	40.9%	2	11.7%	9.6%	40.2%	36.8%	4
Oshkosh	3.5%	10.9%	45.8%	37.7%	5	9.6%	8.9%	37.5%	42.3%	1
Sheboygan	3.8%	12.8%	39.7%	40.0%	7	10.9%	8.0%	34.6%	43.8%	2
Milwaukee	11.6%	21.3%	46.5%	16.8%		35.9%	16.5%	33.7%	11.5%	
Wisconsin	4.2%	9.9%	41.1%	42.8%		12.9%	10.5%	38.0%	37.2%	

Table 17: 6th grade WKCE reading and math scores, 2006-07

Performance	6th grade scores									
	Reading					Math				
	Minimum	Basic	Proficient	Advanced	Rank	Minimum	Basic	Proficient	Advanced	Rank
Madison	7.5%	9.6%	34.0%	48.0%	7	15.2%	10.2%	34.7%	39.1%	9
Kenosha	6.3%	10.0%	44.1%	38.6%	6	9.6%	11.4%	46.2%	31.9%	5
Racine	8.5%	16.5%	44.6%	27.6%	10	22.3%	19.4%	42.8%	13.6%	10
Green Bay	6.8%	13.8%	40.5%	35.6%	9	10.5%	10.3%	39.4%	38.3%	6
Appleton	2.5%	7.7%	34.5%	53.4%	3	7.9%	8.3%	43.0%	39.3%	2
Waukesha	1.3%	5.0%	35.9%	54.7%	1	8.0%	10.0%	45.4%	33.8%	4
Eau Claire	4.1%	4.5%	38.4%	49.8%	2	9.9%	10.7%	43.0%	33.1%	7
Janesville	4.9%	9.3%	44.8%	39.9%	5	11.2%	13.8%	43.9%	30.3%	8
Oshkosh	3.9%	5.6%	42.8%	44.6%	4	4.7%	10.1%	40.6%	42.8%	1
Sheboygan	6.4%	11.1%	41.5%	38.4%	8	7.2%	8.7%	40.6%	41.4%	3
Milwaukee	13.2%	21.2%	46.4%	15.4%		36.3%	21.0%	32.7%	6.9%	
Wisconsin	4.5%	8.8%	40.6%	44.4%		11.1%	10.9%	42.8%	33.4%	

Table 18: 7th grade WKCE reading and math scores, 2006-07

Performance	7th grade scores									
	Reading					Math				
	Minimum	Basic	Proficient	Advanced	Rank	Minimum	Basic	Proficient	Advanced	Rank
Madison	7.8%	11.8%	33.7%	45.4%	8	12.4%	11.1%	39.8%	35.4%	9
Kenosha	6.2%	11.2%	43.7%	37.7%	6	9.2%	13.0%	48.0%	28.6%	8
Racine	9.5%	16.4%	43.5%	27.3%	10	18.6%	18.0%	45.1%	15.9%	10
Green Bay	7.4%	11.3%	41.5%	37.1%	9	9.8%	10.2%	41.5%	37.5%	6
Appleton	3.1%	6.1%	34.8%	52.0%	5	4.9%	7.6%	43.5%	42.4%	1
Waukesha	2.6%	5.7%	37.3%	51.7%	1	6.7%	10.5%	49.1%	31.4%	4
Eau Claire	2.8%	7.7%	33.8%	53.1%	4	8.5%	10.6%	43.2%	34.9%	7
Janesville	4.0%	7.1%	44.3%	43.3%	2	8.5%	10.1%	51.8%	28.7%	3
Oshkosh	2.5%	7.0%	41.9%	45.2%	3	5.6%	8.3%	46.3%	38.8%	2
Sheboygan	5.3%	12.5%	44.5%	35.2%	7	5.7%	11.4%	44.2%	36.0%	5
Milwaukee	15.3%	21.9%	42.9%	14.9%		30.1%	22.1%	36.6%	7.2%	
Wisconsin	4.7%	8.9%	39.4%	45.1%		8.6%	10.5%	46.2%	33.1%	

Table 19: 8th grade WKCE reading and math scores, 2006-07

Performance	8th grade scores									
	Reading					Math				
	Minimum	Basic	Proficient	Advanced	Rank	Minimum	Basic	Proficient	Advanced	Rank
Madison	6.9%	9.6%	34.3%	47.0%	7	10.7%	13.0%	41.8%	32.6%	6
Kenosha	6.3%	11.1%	45.4%	36.0%	6	10.5%	16.4%	48.1%	23.9%	8
Racine	11.2%	14.3%	45.7%	24.3%	10	19.6%	22.4%	41.2%	13.5%	10
Green Bay	6.2%	11.7%	41.9%	36.4%	9	10.9%	13.4%	43.3%	30.9%	7
Appleton	3.2%	5.8%	38.9%	49.1%	1	6.2%	11.0%	47.3%	33.6%	2
Waukesha	4.2%	8.7%	39.4%	46.0%	3	7.0%	12.0%	52.1%	27.3%	4
Eau Claire	3.3%	7.1%	37.7%	48.8%	2	5.8%	11.5%	53.7%	25.8%	3
Janesville	7.4%	8.2%	39.5%	43.5%	5	10.2%	18.1%	49.7%	20.6%	9
Oshkosh	4.2%	7.6%	42.6%	42.7%	4	7.3%	8.5%	51.9%	30.7%	1
Sheboygan	6.0%	12.0%	40.0%	39.4%	8	8.2%	13.0%	45.1%	30.8%	5
Milwaukee	13.2%	20.2%	46.2%	15.6%		28.9%	27.4%	34.3%	5.3%	
Wisconsin	4.8%	8.9%	41.1%	43.1%		9.2%	13.7%	48.1%	27.2%	

Table 20: 10th grade WKCE reading and math scores, 2006-07

<u>Performance</u>	10th grade scores									
	Reading					Math				
	Minimum	Basic	Proficient	Advanced	Rank	Minimum	Basic	Proficient	Advanced	Rank
Madison	16.3%	14.6%	23.7%	42.3%	9	20.4%	8.6%	35.5%	32.5%	7
Kenosha	10.7%	15.9%	33.6%	36.6%	7	18.8%	18.1%	43.3%	18.7%	9
Racine	21.3%	21.0%	29.1%	23.2%	10	28.4%	20.4%	36.8%	10.9%	10
Green Bay	9.9%	17.5%	30.8%	38.2%	8	16.1%	15.0%	45.4%	21.9%	8
Appleton	7.1%	11.6%	32.3%	45.8%	4	11.0%	12.1%	44.4%	30.7%	2
Waukesha	6.5%	12.5%	35.1%	44.9%	3	11.5%	14.9%	49.1%	23.6%	4
Eau Claire	5.5%	12.0%	33.4%	47.2%	2	11.5%	11.3%	44.1%	31.1%	1
Janesville	5.5%	10.6%	35.5%	45.9%	1	13.9%	15.1%	47.2%	21.1%	6
Oshkosh	6.3%	14.4%	37.2%	39.1%	5	9.7%	13.9%	49.7%	24.2%	3
Sheboygan	7.7%	16.6%	34.4%	38.4%	6	11.9%	15.7%	37.9%	31.3%	5
Milwaukee	28.0%	25.0%	25.3%	13.2%		43.9%	19.6%	24.3%	4.3%	
Wisconsin	8.6%	13.4%	32.4%	43.2%		13.3%	12.9%	45.2%	26.4%	

Table 21: High school completion, 2005-06

<u>Graduation</u>	Total expected to complete high school	Regular diplomas	% regular diplomas	Rank
Madison	2,206	1,888	85.6%	7
Kenosha	1,617	1,428	88.3%	6
Racine	1,698	1,211	71.3%	10
Green Bay	1,611	1,266	78.6%	9
Appleton	1,266	1,219	96.3%	1
Waukesha	1,102	1,047	95.0%	2
Eau Claire	974	910	93.4%	3
Janesville	860	735	85.5%	8
Oshkosh	794	705	88.8%	5
Sheboygan	784	720	91.8%	4
Milwaukee	6,346	4,309	67.9%	
State of Wisconsin	70,539	62,991	89.3%	

Table 22: Advanced placement (AP) exams, 2005-06

<u>Performance</u>	Exams passed	% exams passed	Passed as a % of enrollment	Rank
Madison	1,054	84.7%	12.9%	2
Kenosha	346	61.6%	5.1%	8
Racine AP	145	51.1%	2.1%	
Racine IB	75	75.0%	1.1%	
Racine total AP & IB	220	57.3%	3.2%	10
Green Bay	281	70.6%	4.3%	9
Appleton	607	67.9%	12.0%	3
Waukesha	520	74.9%	10.5%	4
Eau Claire	551	70.3%	15.0%	1
Janesville	256	65.1%	7.0%	5
Oshkosh	208	76.8%	6.1%	6
Sheboygan	188	67.9%	5.7%	7
Milwaukee	395	28.5%	1.5%	
State of Wisconsin	21,638	68.4%	7.5%	